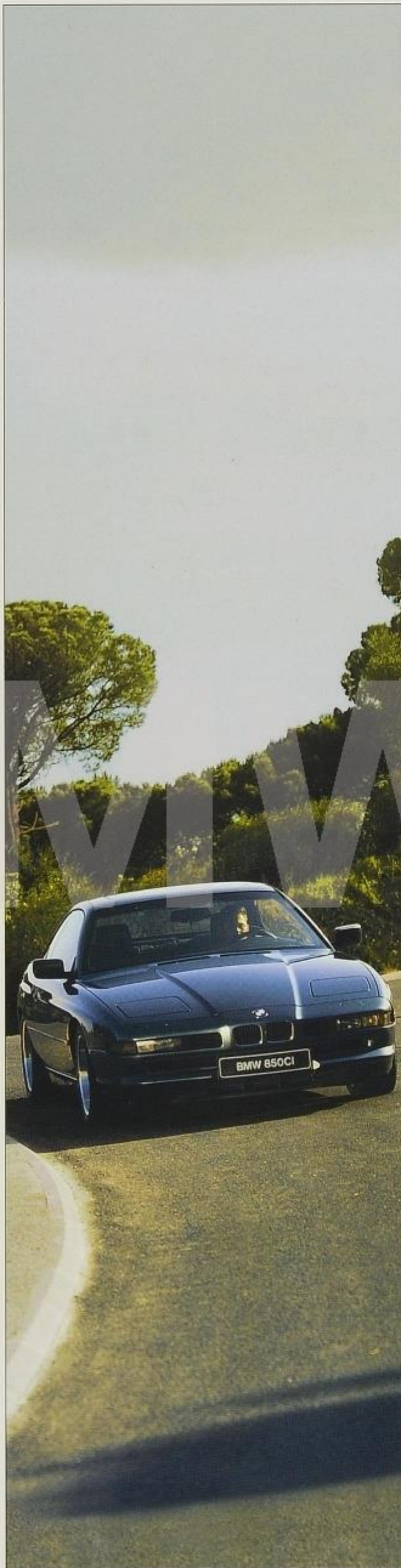


The BMW 8-Series Coupes



meeknet.co.uk



Design
Pages 4-13

Performance/Safety
Pages 14-19

Interior/Security
Pages 20-23

Heritage
Page 24

Customer Care
Page 25

Finance/Leasing
Page 26

Technical Data
Page 27

Standard and Optional
Equipment
Pages 28-29

Color and Upholstery
Pages 30-31



Sports driving at its best. BMW has the perfect answer for those driving enthusiasts who desire breathtaking sports performance served up with elegance. It's the strikingly unique BMW 8-Series – designed to be the boldest, most advanced luxury performance sports coupe in the world. The flagship 850Ci – crafted in limited numbers and available only by special order – offers the awesome power of a 5.4-liter V12 engine and all the sophisticated appointments one would expect in a top-of-the-line luxury car. The 840Ci, with its vibrant, 4.4-liter V8 engine, STEPTRONIC transmission and gleaming bird's-eye maple wood trim, makes the sheer joy of sports driving more attainable. This year, join in the pursuit of excellence – in two of the sleekest, most exciting cars in the world.

BMW 8-Series



Official International Automobile Sponsor

Breathtaking in every respect. Uncompromising in every detail, the BMW 8-Series Sports Coupes are a finely balanced interplay of characteristics that demonstrate BMW's mastery of automotive art. The dynamic spirit and styling of these uniquely individual world-class automobiles push driving excitement into a new realm.

The 850Ci is a driving machine that represents the best of all worlds - luxury, agility, and an almost animal-like sense

of power. The throaty sound and awesome response of its 5.4-liter V12 deliver all that its suave styling promises.



Sleek and elegant, muscular yet graceful, the BMW 8-Series Sports Coupes are a lesson in practical aesthetics.

The sinuous curves and short rear deck contribute to outstanding aerodynamics – and great looks.



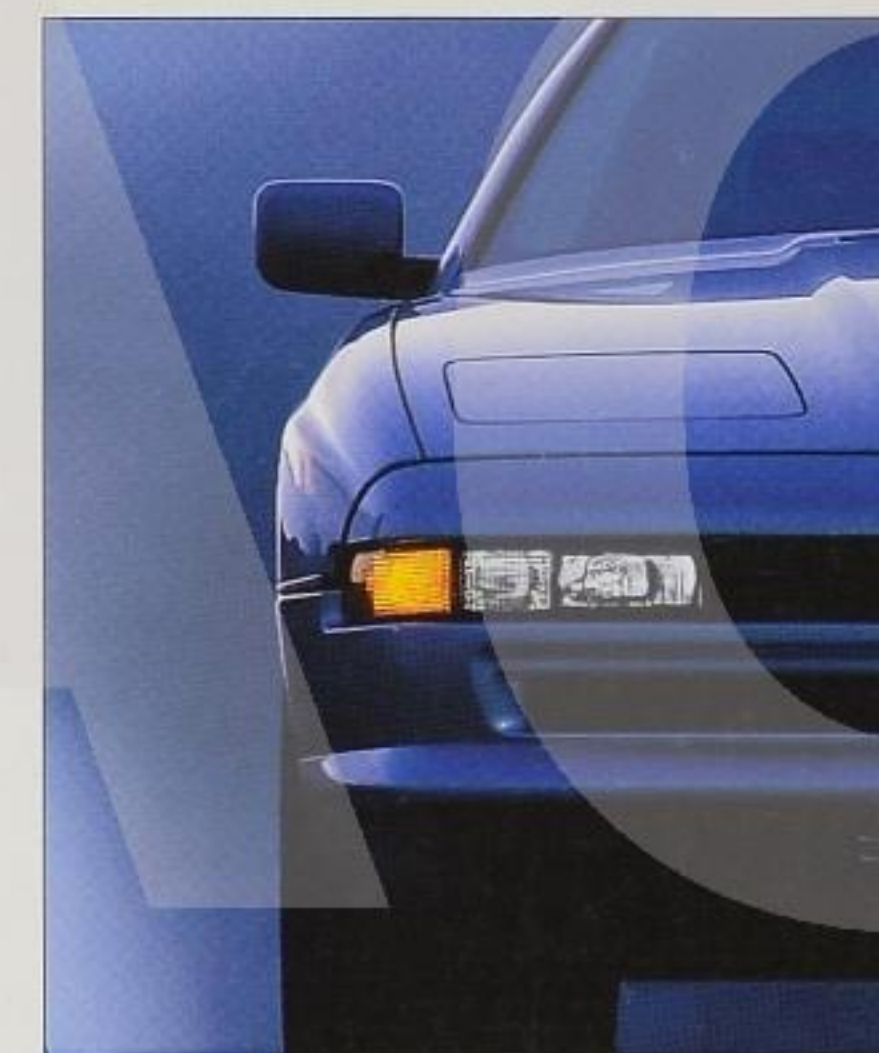
The 840Ci takes full advantage of innovative technological and design features developed for the 850Ci,

offers the refined performance of BMW's V8 engine, and neatly slices the price tag. Clever.



A unique sealing system lowers the windows slightly when doors are

opened, and automatically reseals them when the doors are closed.

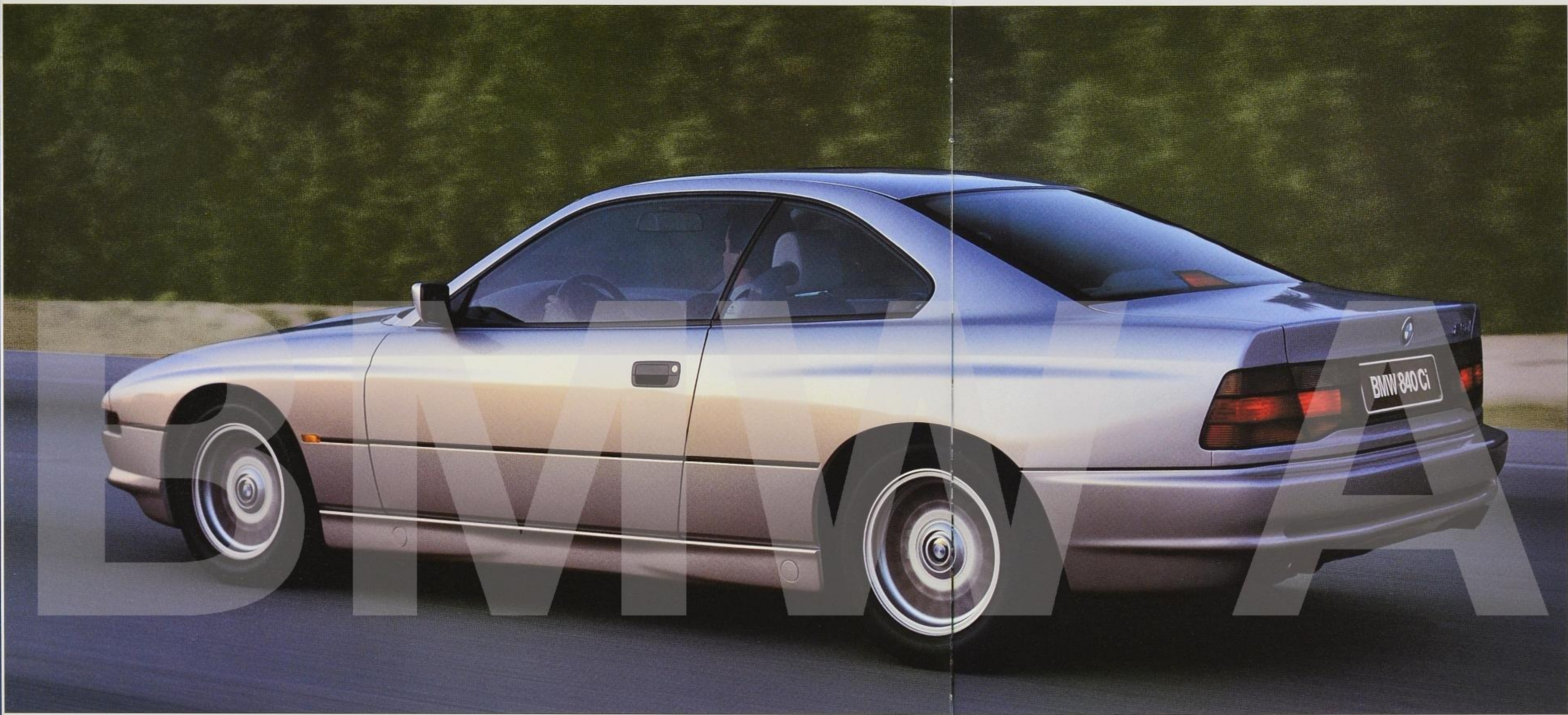


The 8-Series' aggressive stance and wide wedge shape help bring out the beast in this beauty as it tenaciously grips the road.



Pop-up headlights combine halogen high beams, super-ellipsoid low beams and Free Form foglights in low-profile units.

A love of automobiles and driving as a source of pure pleasure. This obsession has guided BMW's long history of technological breakthroughs and racing victories. You'll sense the excitement the moment you take the wheel. It grows as the engine awakens with a growl. The BMW driving experience is a thrill all its own.



The joy of owning a truly great car is the delight one experiences in driving it. 8-Series cars are exciting – not only powering down freeways and through twisty mountain passes, but even cruising around town or commuting to work. A wealth of innovative technologies provide exceptional handling and performance, as well as a taut sense of control.

You feel it in the way the supportive seats fit; in the wraparound instrumentation – all in clear view, right where you instinctively reach. These cars are designed to work in harmony with the driver, with an almost intuitive response. And that's what makes the BMW Driving Experience unlike any other.

One of BMW's finest traditions has been a flagship sports coupe that is the absolute state-of-the-art in performance, technology and design. With the 840Ci and 850Ci, BMW proudly offers two such Coupes.



Attention-grabbing style – in action or at rest. The understated elegance of these thoroughbreds barely conceals their incredible power.



A confident – and comfortable – sense of control. The driver experiences near-effortless performance in a cockpit designed to enhance the union of man and machine. Add to that a masterfully designed interior of creature comforts and thoughtful amenities, and even the longest trip becomes a pleasure to be savored.

In a car of this calibre, the interior luxury and wealth of conveniences complement the stunning exterior. Soft, gathered

Nappa leather seating and an acoustically balanced audio system combine to soothe the body – and the soul.



A showcase of leading-edge technologies. How do you enhance the thrill of harnessing the 850Ci's 322 horses, or the muscular prowess of the 4.4-liter V8 840Ci? With BMW's 5-speed STEPTRONIC automatic transmission. It offers the hands-on control and responsiveness of a manual – without requiring the fancy footwork of a clutch.

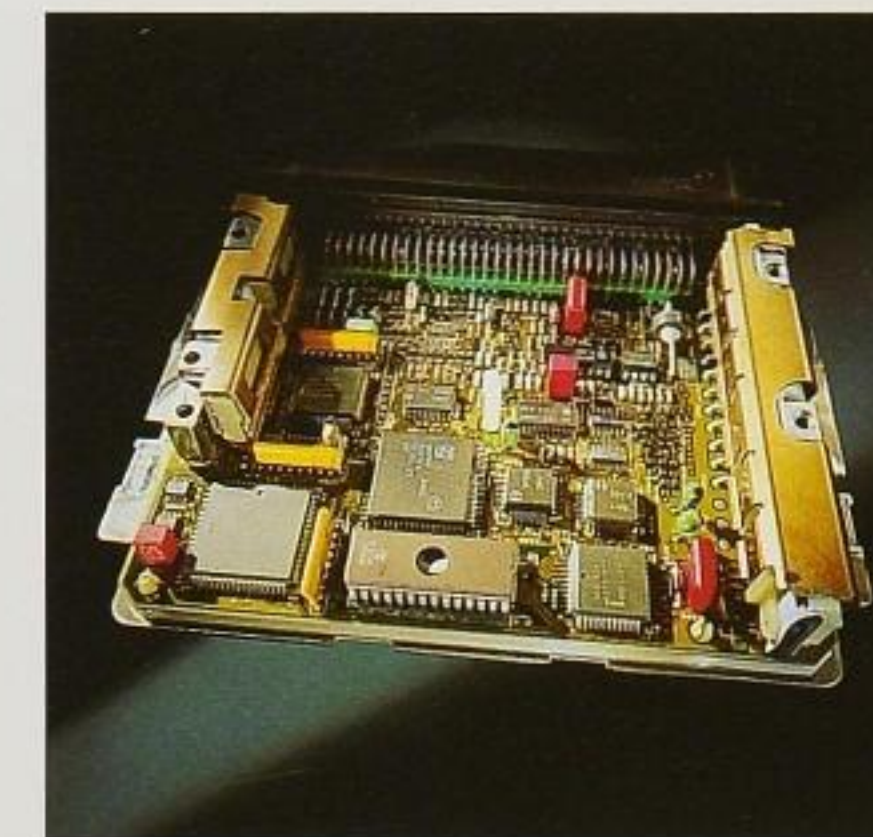
Of course, BMW engines have brawn. But they also have brains, as well as a healthy measure of flexibility and durability. BMW technology provides high specific torque and power output. Yet, unlike many other powerful engines, their performance is smoothly refined.

An "intelligent" engine. This is due in large part to BMW's highly sophisticated Digital Motor Electronics system (DME). DME continually monitors such factors as engine temperature, speed, intake airflow, exhaust gas composition, even the elevation of the road – and then literally adjusts the engine hundreds of times a second to maximize performance and efficiency. In the unlikely event of certain electrical faults, DME can actually reconfigure itself to bypass the problem. It then remembers the problem and stores it for later retrieval by service technicians. Like the sophisticated back-up systems on aircraft, the V12 850Ci has a Dual DME system with which the engine can run on six cylinders, if necessary.

Electronic throttles on the V12 replace the conventional mechanical link between the accelerator and throttle. An electronic system coordinates feedback from all systems that influence engine power, such as Adaptive Transmission Control, All Season Traction and Cruise Control, resulting in greater efficiency*.

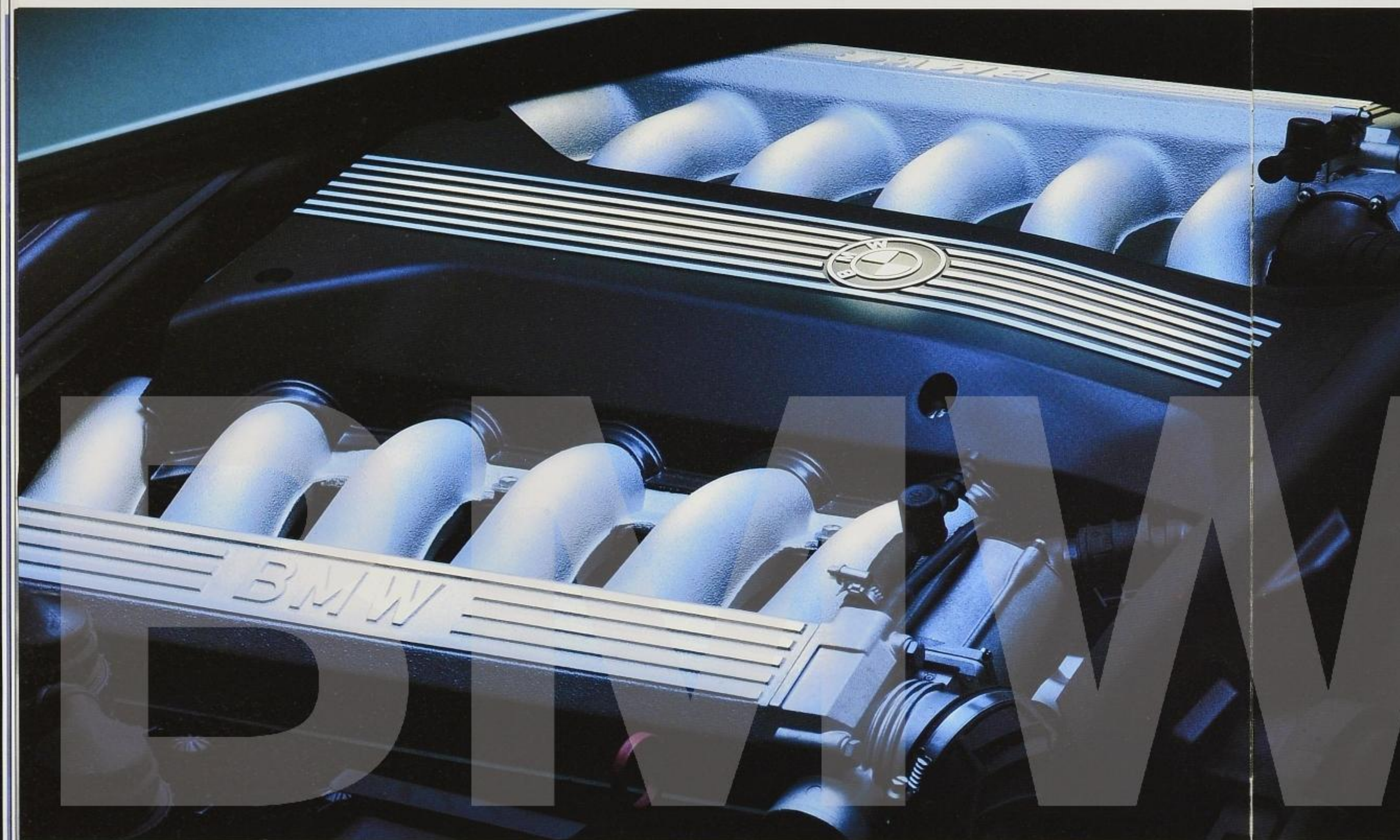
Cylinder-specific knock control allows a higher compression ratio to be used, helping improve fuel efficiency* and engine response. The result is a smooth combustion process in all cylinders. Knock control helps protect against damage from low-octane fuel, as well.

* EPA estimates (city/highway): 850Ci: 14/20 mpg; 840Ci: 15/20 mpg est. Use estimated mpg for comparison to other cars. Your mileage may vary with speed, trip length and weather; actual highway mileage will probably be less.



Digital Motor Electronics (DME) is BMW's advanced engine management system. DME controls fuel metering and ignition timing for efficient operation.

In the 850Ci, Dual DME provides a reassuring back-up system. In the unlikely event of a problem, it allows the V12 engine to run on only six cylinders.



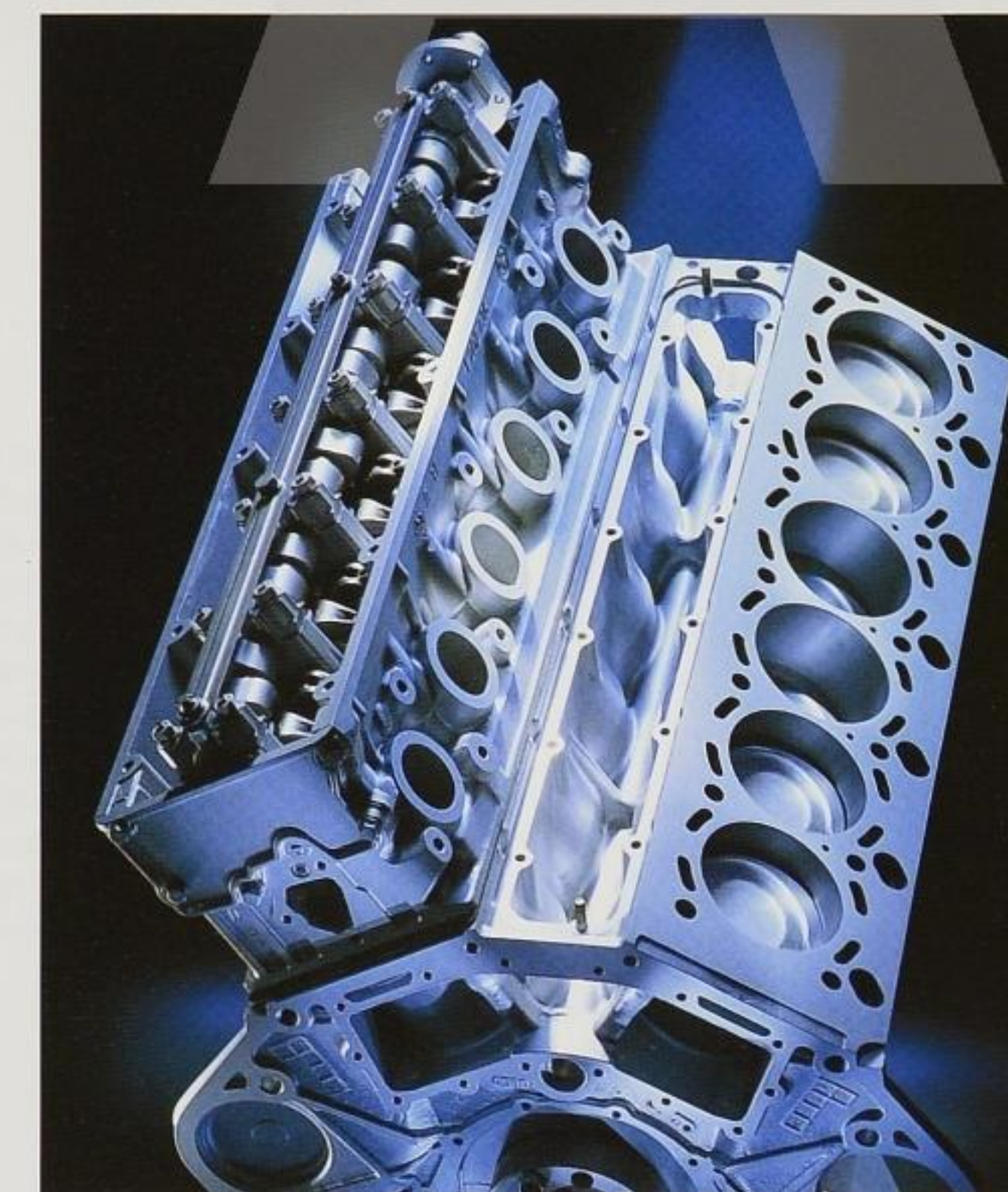
For those who appreciate power at their fingertips, BMW's V12 is one of the world's finest performance engines in a luxury car. Advanced BMW engineering has

created the remarkably smooth, high-torque performance of the 850Ci V12. This impressive 5.4-liter engine delivers 322 hp at 5000 rpm and 361 lb-ft of torque at 3900 rpm. Its extraordinary power can propel the 850Ci from 0-60 mph in 6.4 seconds

for a truly exhilarating driving experience. Oil-cooled pistons are just one of the many engineering refinements that allow this V12 to provide unparalleled smoothness with surprisingly low maintenance.

Turn the key. The distinctive sound that only a V12 can make creates traveling music that is a joy to every driving enthusiast's ear.

The free-revving V12 engine provides dramatic acceleration, yet is amazingly quiet and tractable for everyday driving. Unlike most belt drives, the V12's chain camshaft drive requires no routine maintenance.



Low routine maintenance.

Ease of ownership and long-term value are considerations in any new car purchase. An important benefit of the 8-Series is that the powerful engines require little routine maintenance other than changes of oil, filters and spark plugs. The 850Ci includes the BMW Full Maintenance Program, which covers all recommended scheduled maintenance, as well as replacing additional items due to wear and tear, for the term of the limited warranty. Designed to offer additional peace of mind, BMW Full Maintenance and Scheduled Maintenance Programs are available as options for the 840Ci.*

A 5-speed transmission that requires no maintenance.

Most automatic transmissions have four forward gears. BMW's 5-speed automatic has an additional gear. The benefit? A lower "low" gear for improved off-the-line response, and a higher "high" gear for increased efficiency. And a bonus value – its fluid doesn't need to be changed for the life of the car.

Your choice: automatic or manual at a flick. Contributing to the vibrant performance of both the 840Ci and 850Ci is BMW's STEPTRONIC dual-mode transmission. STEPTRONIC provides the hands-on control – and fun – of a manual transmission, without using a clutch. To use STEPTRONIC, the driver simply moves the shift lever into a second gateway, where the lever can be lightly tapped forward or back to select the next-higher or next-lower gear.

*See your dealer for details on these programs. Some exclusions and mileage limitations apply. Programs available with three different time/mileage options.



The 4.4-liter DOHC 32-valve V8 power plant in the 840Ci generates a rich torque curve. Compared to the previous 4.0-liter engine, which produced 295 lb-ft of torque at 4500 rpm, it reaches a torque peak of 310 lb-ft at 3900 rpm. This increase in torque, combined with lighter engine components and other refinements, provides faster acceleration at low revs, such as when moving out from a complete stop, and also when going from low to high speeds.

Adaptive Transmission Control. When set in "Automatic", the 8-Series benefits from BMW's Adaptive Transmission Control (ATC). By tracking movements of the accelerator pedal, ATC recognizes how aggressively or gently the driver is driving. Upon quick accelerator movements while the car is moving, on start-up or kickdown to the floor, ATC's logic immediately selects Sport mode. It detects slippery conditions, stop-and-go traffic or cornering, and adjusts shifting accordingly. The driver isn't even aware of ATC – but enjoys wonderfully responsive power and smoothness.

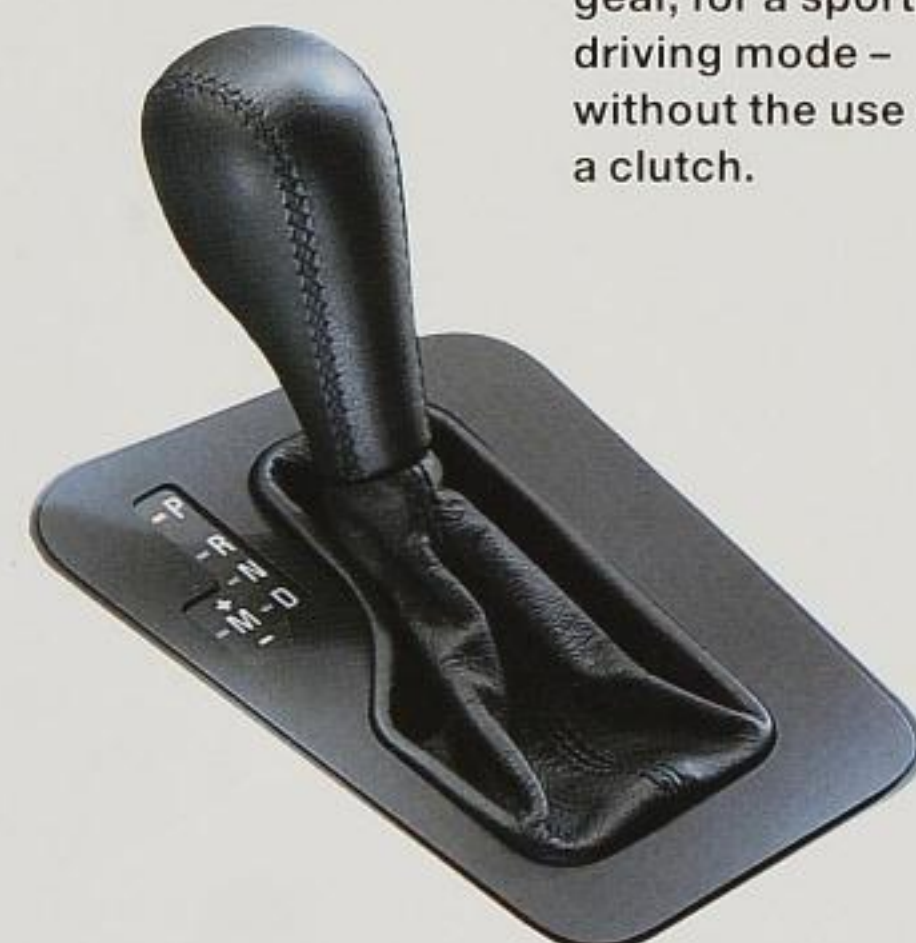
Servotronic, the power-steering system in the 8-Series, varies power assistance according to the speed at which the car is actually traveling, giving ample power assistance at low road speeds and in parking maneuvers, and reduced assistance – with a better feel for the road – at higher speeds.

The V8's internal technologies. The V8 engine in the 840Ci incorporates state-of-the-art technology to achieve remarkable performance. For instance, sintered connecting rods are lighter and more consistent in weight than conventional rods, contributing to a smoother-running engine. In construction, they are broken apart in a specific fracture pattern. When realigned, the "broken" mating surfaces unite the two pieces around the crankshaft with a precision that is unattainable using conventional manufacturing techniques.

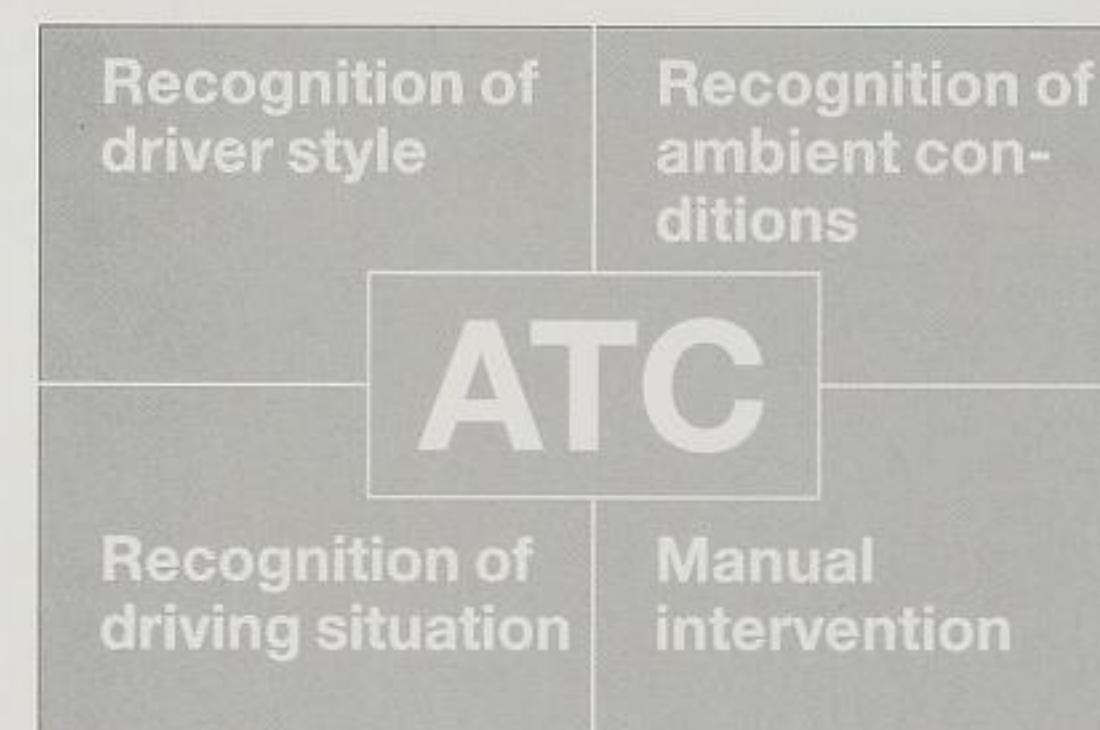
Hydraulic engine mounts isolate engine and transmission vibrations from the body of the car. As a result, you'll be impressed with the engine's smoothness and muted sound.

Thrilling 8-Series performance is enhanced with BMW's STEPTRONIC transmission. By

moving the shift lever left from "D", the driver can manually tap into a higher or lower gear, for a sportier driving mode – without the use of a clutch.



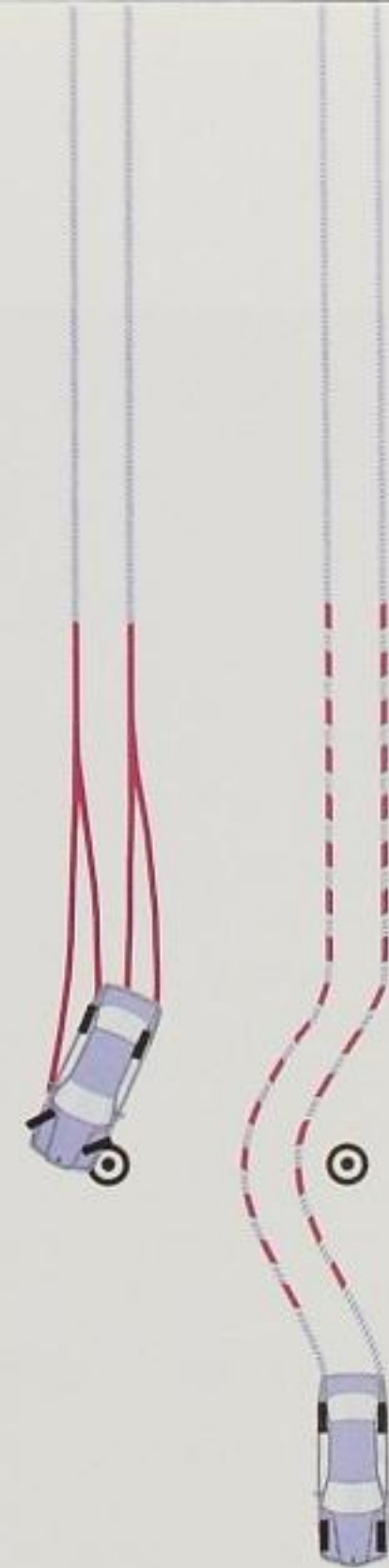
Adaptive Transmission Control (ATC) automatically selects the best shift pattern in each driving situation, adjusting for driving style, traffic or road conditions. Or you can select manual shifting.



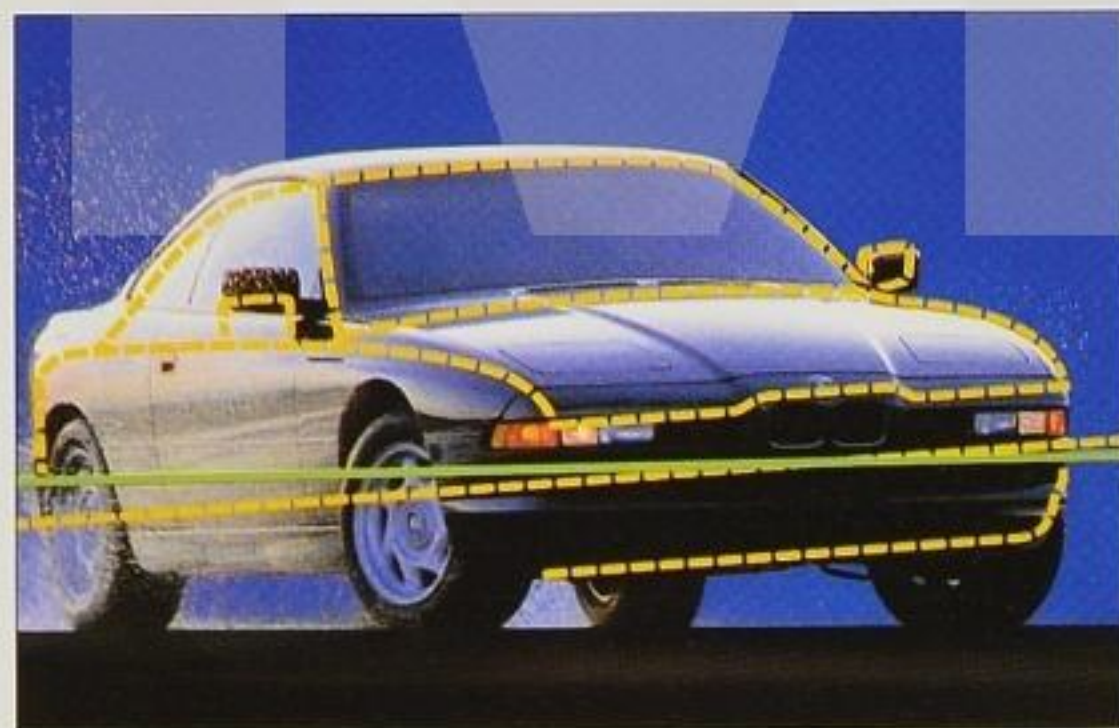
Safety has been a cornerstone of BMW's philosophy for decades. At BMW, safety even has a name: F.I.R.S.T., which stands for Fully Integrated Road Safety Technology. F.I.R.S.T. consists of active and passive safety features designed both to help you avoid accidents, and to help protect you, your passengers and your vehicle during and after an accident. F.I.R.S.T. incorporates a host of safety features, including anti-lock brakes, dual airbags, and rigid body structures.

Avoiding an accident is far better than reducing its consequences. BMW's protective premise is that it's better to avoid a hazardous situation as "actively" as possible. BMWs are designed and engineered with sophisticated technologies that optimize the car's response to the driver's commands. Every BMW is endowed with Active Safety features such as a responsive engine, stable suspension, precise steering and large anti-lock brakes to provide exceptional handling and control, and an outstanding sense of the road. These Active Safety features aid your ability to drive out of potentially dangerous situations, helping to increase your confidence. It's that confidence in yourself and your car that can sometimes make a crucial difference.

Not every accident can be avoided. BMW design helps provide protection to reduce the consequences. You may not see them, but BMWs are built with many impressive safety features throughout. The extremely rigid steel passenger "safety cage" is designed to help protect the car's occupants. Front or rear collisions up to 9 mph are absorbed by compressible "crush tubes" that help prevent costly damage. Only at higher impact speeds do structural supports begin to deform, dissipating impact energy to help protect occupants.



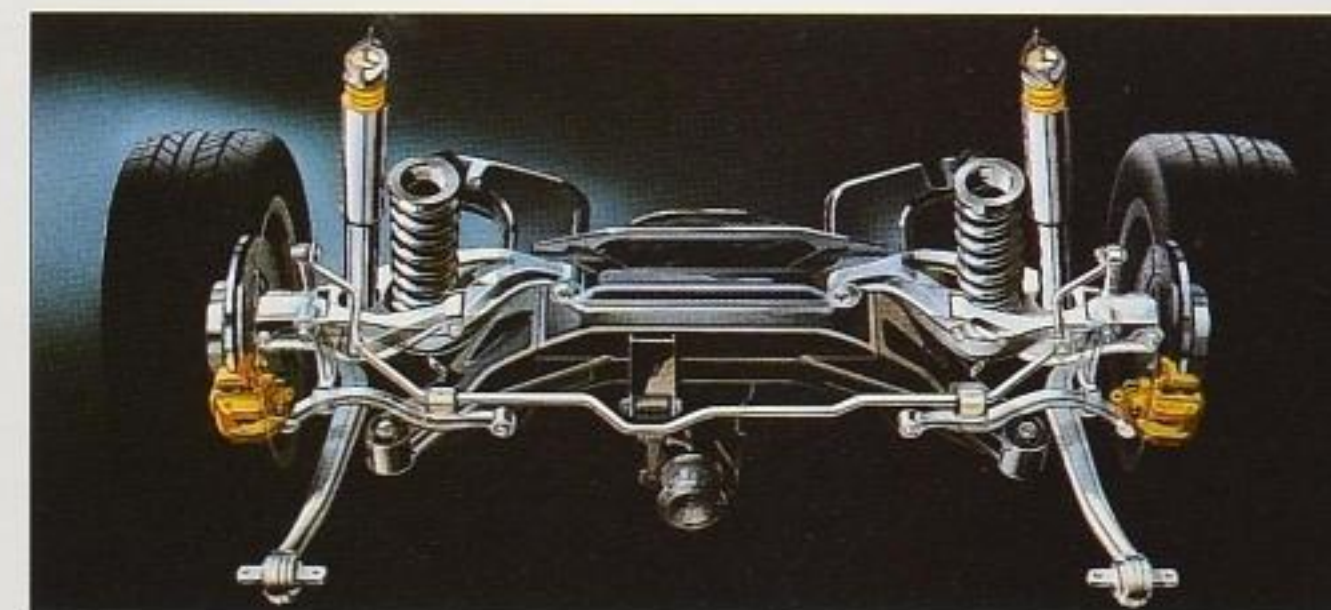
Electronic Damping Control (EDC) adjusts shock absorber settings in milliseconds to changes in road, load or driving conditions. The result is exceptional ride comfort and handling. (850Ci only)



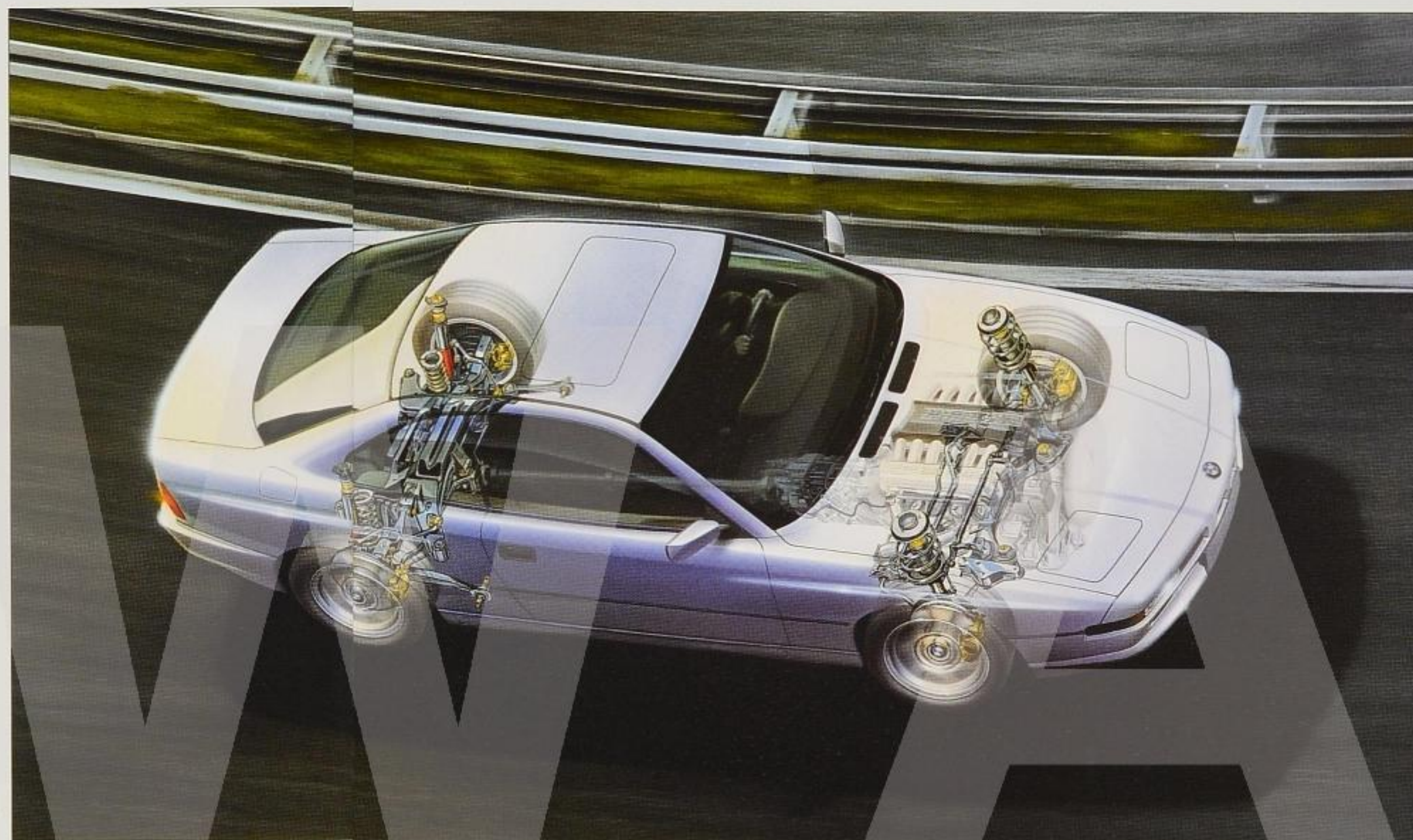
BMW's anti-lock braking system (ABS) helps prevent wheel lock-up under hard braking or when braking traction is limited – helping the driver avoid objects and drive out of potentially dangerous situations.

These are drivers' cars, designed to provide exceptional feedback for a better sense of the road and a genuine sports driving experience. The taut steering and suspension systems react quickly and predictably to your command. A wide track and near 50/50 weight distribution result in outstanding stability, excellent control under braking and superb cornering ability.

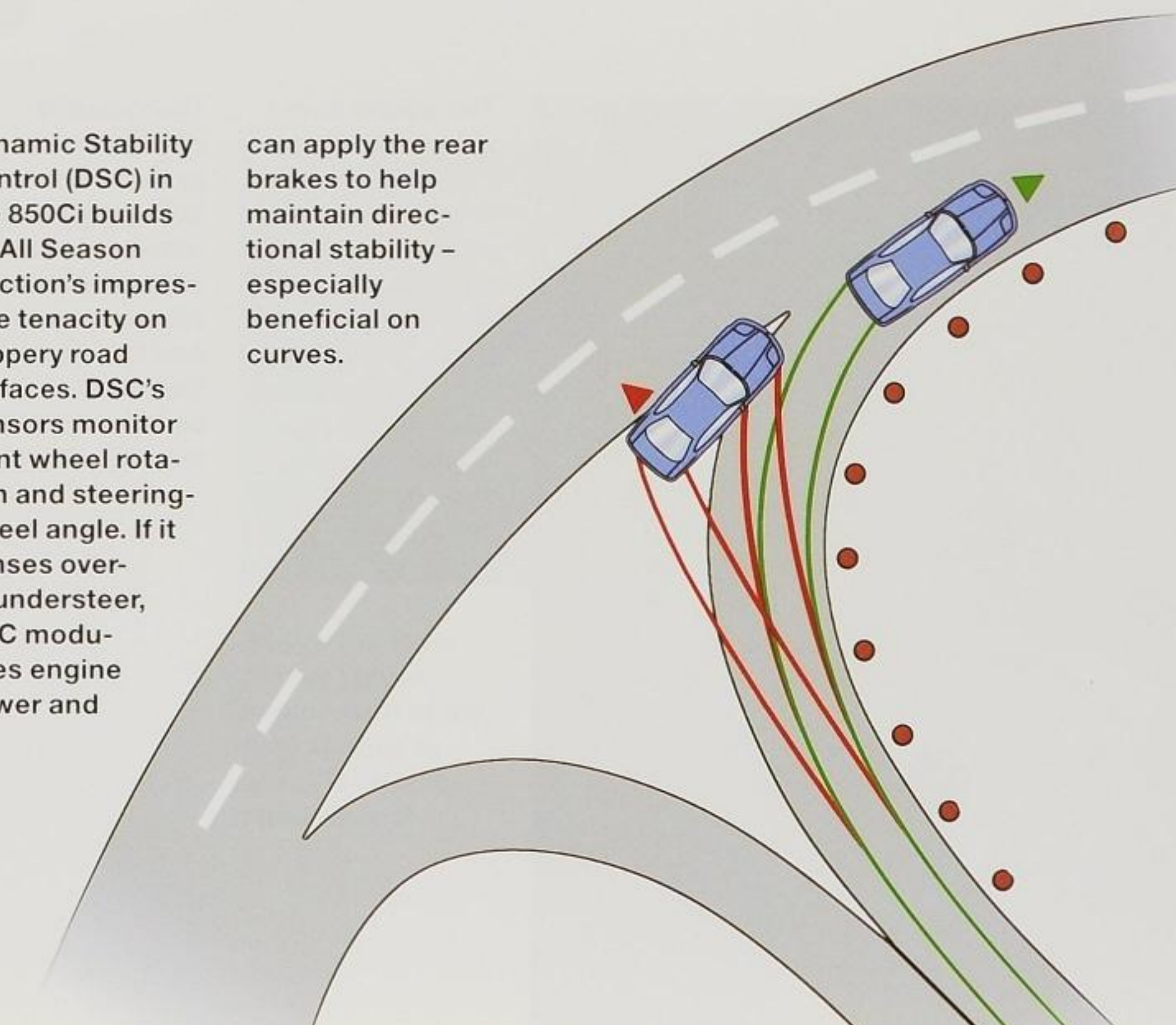
Slippery conditions occur year-round: on sand, packed snow or ice, wet leaves or rain-slicked roads. If wheelspin is detected, All Season Traction reduces power and applies brakes selectively until traction is restored.



The innovative integral rear suspension combines lateral control arms, trailing links and the system's key – integral links. This provides outstanding road-holding stability even on rough surfaces.



Dynamic Stability Control (DSC) in the 850Ci builds on All Season Traction's impressive tenacity on slippery road surfaces. DSC's sensors monitor front wheel rotation and steering-wheel angle. If it senses over or understeer, DSC modulates engine power and can apply the rear brakes to help maintain directional stability – especially beneficial on curves.



Road-hugging suspension. The secrets behind the 8-Series' fantastic handling include its unique double-pivot strut front suspension and multi-link integral rear suspension; its near 50/50 weight distribution; and wide track. The integral rear suspension system ingeniously allows individual wheels to move independently of each other in three dimensions in response to road conditions and cornering or braking forces. The result is minimal dive and squat under braking and acceleration, superb cornering ability, and excellent directional stability – even on rough surfaces.

All Season Traction offers impressive road-holding stability. All Season Traction, a standard feature on the 8-Series, can instantly sense wheelspin when one or both rear wheels start turning faster than the front ones. It then stops the wheelspin by reducing engine power and applying the rear brakes selectively. This gives the driver more control on slippery surfaces, such as wet pavement, packed snow or ice, and gravel. For sporty driving, deep snow or sand, or when snow chains are used, the system can be switched off.

Dynamic Stability Control (850Ci) expands All Season Traction's capabilities by adding a sensor for steering angle to detect cornering forces. On the basis of this signal and differences in speed between the two front wheels, DSC logic recognizes if there is understeer or oversteer, adjusts engine power, and can even apply the rear brakes to help stabilize the car. DSC is yet another sophisticated system that helps the BMW driver maintain control under challenging conditions.

Sophisticated. Sumptuous. Serious sport. Intelligently designed gauges and controls clearly inform and crisply respond to the driver's commands. Lush surroundings and fabulous sound combine to soothe the body and lift the spirits. Simply put, here is a driving environment that performs as superbly as the car.

Clear readouts of the on-board computer keep the driver informed of a wide range of data, such as estimated arrival time and average fuel consumption.



Technology Guide

An intelligently designed control center with everything at a glance and at your fingertips. The cleanly elegant cockpit places everything at hand: controls, readouts, buttons, gearshift. Large and easy to read, the tachometer and speedometer are centrally mounted in the instrument panel with smaller, secondary gauges outboard from the main gauges. Surfaces are designed to reduce glare and improve visibility.

The driver operates the car from two zones. Driving control-related items, such as windshield wipers, turn signals, lights and cruise control, are placed in the "primary zone" immediately around the steering wheel. Other items, such as the climate control, sound system and on-board computer, are to the right of the steering wheel.

The on-board computer offers the driver a wide range of information such as fuel consumption, estimated arrival time and "miles to empty." It alerts you if the temperature has dropped to a point where the road may ice up. It even has a driver-adjustable speed limit warning.

The Multi Information Display (MID) combines all functions of the Check/Control monitoring system, Service Interval Indicator and on-board computer into one unit. In addition to time, date and other data, the MID's 20-character alphanumeric display keeps the driver informed of various aspects of the car's operating condition.

Service when your BMW needs it – based on how you drive, not how far you drive. The Service Interval Indicator, unique to BMW, continuously analyzes the way you use your car. This analysis is used to determine when your particular car needs servicing – not just by how many miles it has gone. The benefit in most instances: fewer service visits – because you bring your car in for service only when it calls for it.

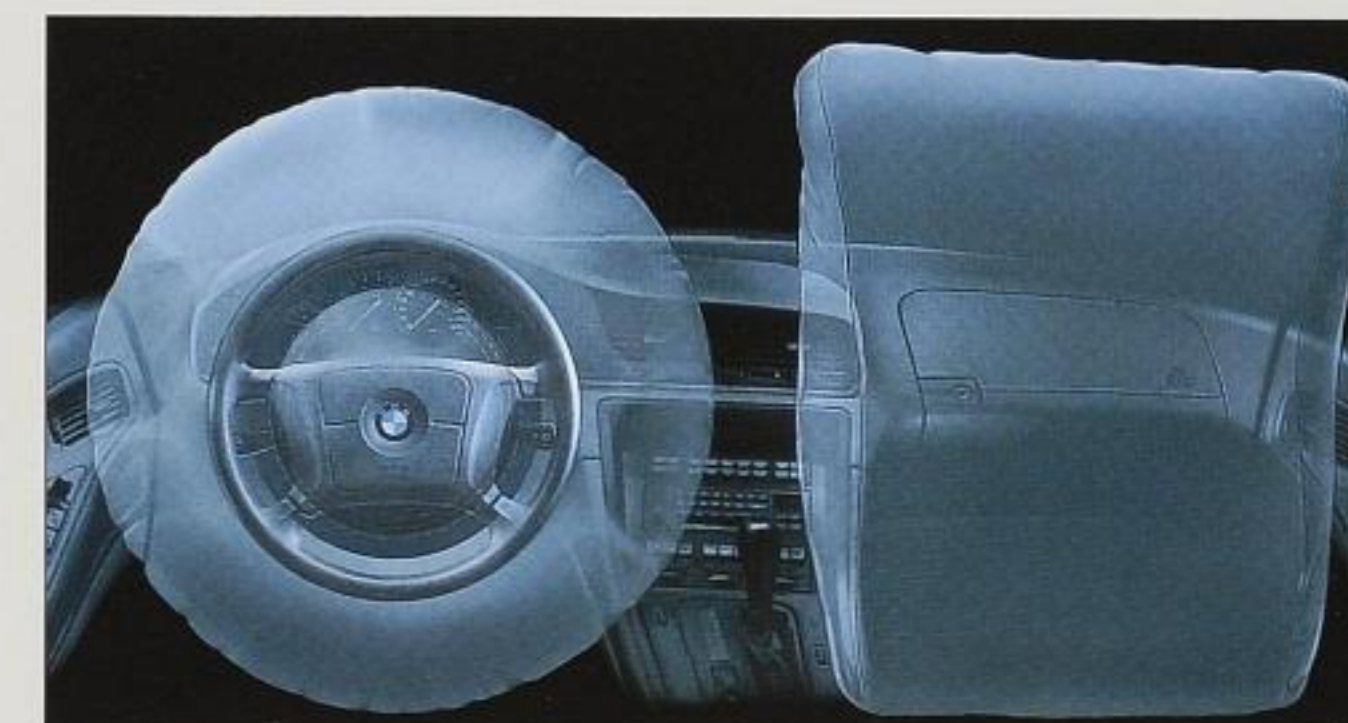
As you step in, your senses are immediately rewarded. Much of the interior is hand-crafted; supple Nappa leather surrounds occupants with comfort and elegance. The 850Ci includes a voice-activated cellular telephone that can be used in or out of the car, and a 6-disc CD changer (both optional on the 840Ci). A superb anti-theft 200-watt* premium AM/FM stereo system with 12 speakers fills the hushed interior with exceptional sound.

*At 10% total harmonic distortion.



The center console's on-board computer lets you pre-set, change or access many travel conveniences. You can set it to automatically ventilate the car while you are away; compute average mpg; and calculate estimated arrival time.

The versatile climate-control system allows both driver and passenger to adjust their own temperate zone. And the micro-filtered air may be cleaner inside than it is outside.



Integrated technology tailors deployment of the dual airbags to specific circumstances. In a

severe frontal impact, if the passenger seat is not occupied, the airbag on that side is not deployed,

saving repair costs after an accident. Safety belts should be worn at all times.

Comfortable seats that are protective as well as luxurious. The multi-zone construction of the orthopedically designed seats allows adjustment of height, backrest angle, cushion angle and lumbar support. The front end of the seat is wedge-shaped to help reduce the possibility of "submarining" – sliding forward beneath the safety belt in an impact. And the springs in the 8-Series seats are actually tuned to the suspension for a more comfortable ride. Standard two-stage seat heating enhances year-round comfort.



The seat-integrated safety-belt system, exclusive to the 8-Series, is anchored to the seat itself. This provides comfortable restraint for occupants of virtually any size, and allows easy access to rear seats. A three-driver memory system recreates settings for the driver's seat, steering wheel and outside mirror positions – great for valet parking.

A versatile climate control system. BMW's automatic recirculation control recognizes poor air quality and automatically switches from fresh air intake to recirculated air. And for better air inside than out, an electrostatically charged micro-filter removes pollen and most dust particles and reduces bacteria and diesel soot. Driver and passenger can adjust individual temperature controls to create their own temperate zones.

A sound investment. For many, a superb sound system is a key ingredient in a luxury automobile. The impressive audio system in the 8-Series has 200 watts* of power driving 12 speakers with equalization custom-contoured to the interior. Ten channels and a crossover network benefit from a three-circuit diversity antenna system for excellent FM stereo reception. A remote multi-CD changer and voice-activated cellular telephone are standard in the 850Ci (optional in the 840Ci).

Mirrors with minds. The inside rear-view mirror dims automatically to reduce glare from the headlights of following vehicles. And when you shift to Reverse, the right outside mirror tilts down to give you a view of the curb – or obstructions.

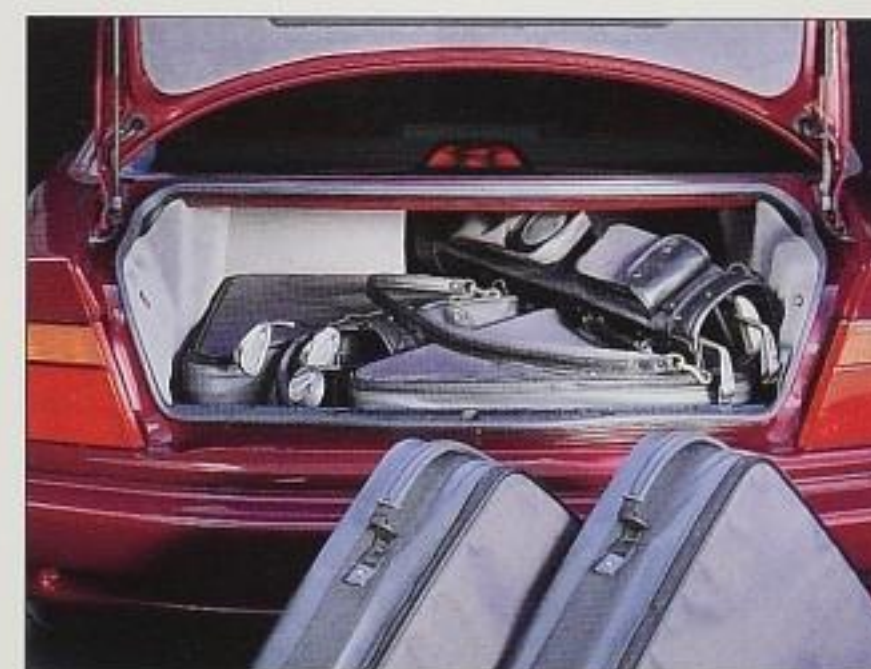
*At 10% total harmonic distortion.



For flexible load-carrying space, the rear seats fold down individually. A center pass-through with an integrated ski bag allows long objects to be carried inside.



Finished in soft velour, the luggage compartment offers ample space for two complete sets of BMW golf bags.



Fully driver-oriented in its design, the cockpit meets the highest demands of both ergonomics and motoring comfort. All primary information is clearly shown, right in the driver's line of vision.



With BMW's Coded Driveaway Protection system, the engine can only be started by a special key after the car has verified the encoded chip within it.

Vehicle protection and security. There are several highly refined security features in the 8-Series, including remote alarm/entry and anti-theft systems. A multi-function key-head remote control allows the user to lock or unlock all doors, open the windows and sunroof, and turn on the interior lights before unlocking the car. In a threatening situation, you can set off a panic alarm with just a touch of a button on the key.

The special key is embedded with a computer chip. If a key is used that is not recognized by the car's Coded Driveaway Protection system, the car will not start – helping deter theft.

Special extra touches abound. Clearly, the 8-Series offers many features to make life – and driving – more pleasant. One-touch power windows lower or rise at a single touch. All windows and the sunroof can be closed or opened from outside the car by holding the key in the lock or unlock position – handy if you've forgotten to close them before leaving, or to vent heat before entering.

For greater visibility and safety, interior lights turn on when opening the driver's door, and also when the ignition is turned off. In cold weather, a heating element automatically de-ices the driver's door lock when the handle is lifted. A tool kit is fitted into the fully carpeted trunk, and tie-downs prevent cargo from shifting.

Power tilt/telescopic steering wheel with automatic tilt-up. A switch on the steering column lets you adjust the steering wheel for comfort and optimum visibility. When the ignition is switched off, the wheel moves up for ease of exit and entry; when the engine is started, the wheel returns to its preset position.

The BMW Heritage – a legendary tradition unlike any other. For over seven decades, the BMW marque has signified cutting-edge technology. From the first, BMW automobiles achieved their timeless styling and uniquely spirited performance because they were created by driving enthusiasts for driving enthusiasts.



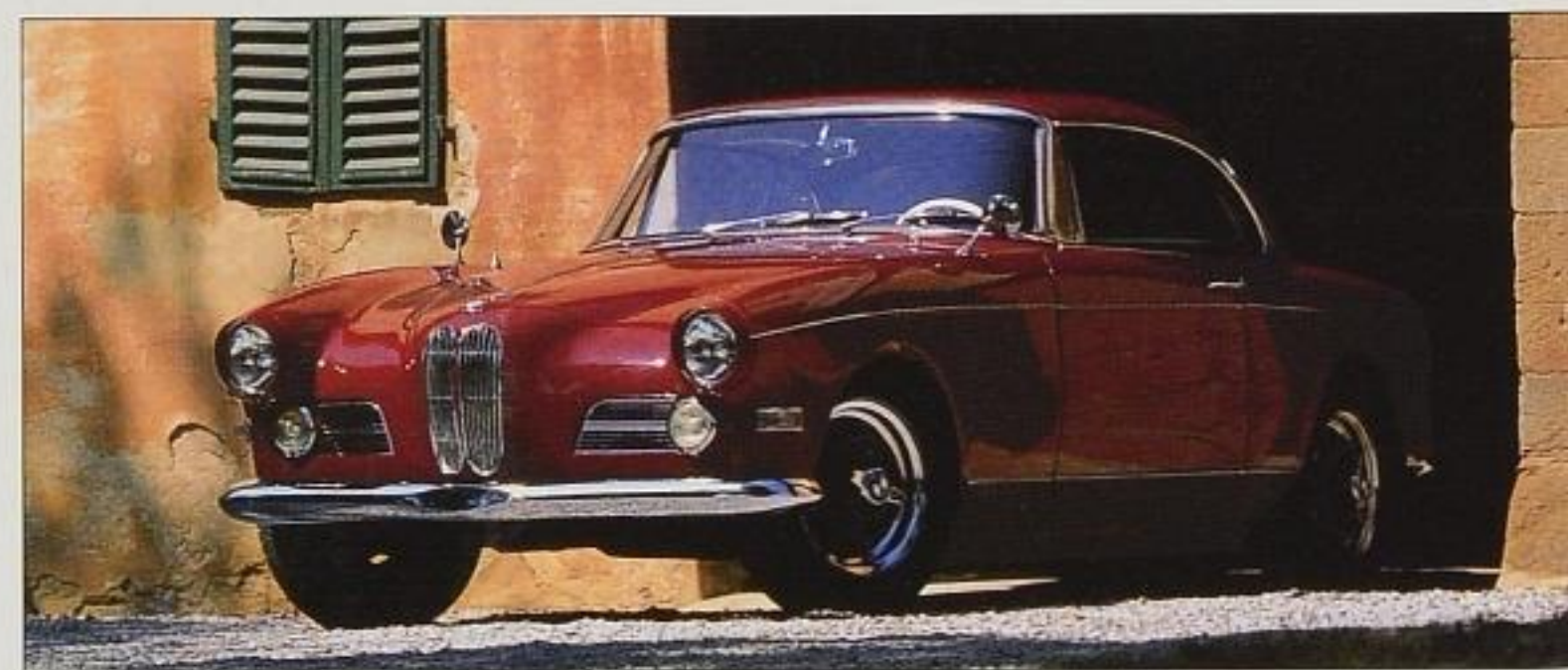
Cars have their own unique character. A great car can make the difference between four wheels that merely get you there, and inventing reasons to go somewhere.

Since they first appeared, BMWs have been special automobiles with a unique driving character – a marque recognized worldwide for superb drivers' cars. BMWs are designed and built

by individuals who were – and are – passionate about driving; it was this obsession that has set BMW's products apart from those made anywhere else in the world.

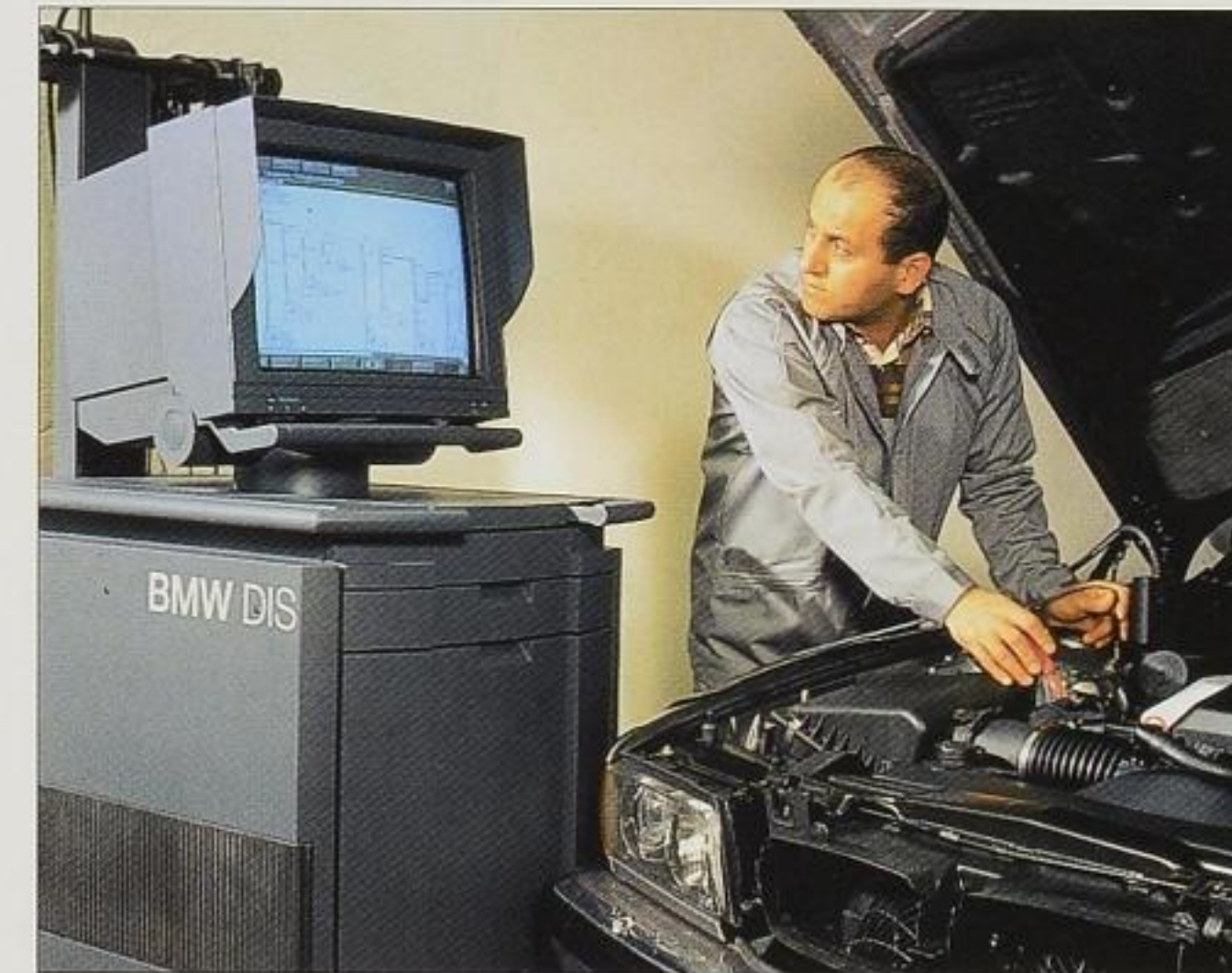
The beautiful BMW 328 roadster of the Thirties became the styling inspiration for generations of sports cars. Built for racing, it conquered the world's race tracks as fast as it did the hearts of car aficionados – and remains one of the most coveted collector cars in the world today.

The forerunner of today's powerful and efficient V8 engine was introduced by BMW nearly 50 years ago. The elegant BMW 503 – powered by one of the first V8 engines to be built in Germany – is still one of the most sought-after classics today.



Today's 8-Series Sports Coupes are the result of this rich heritage of engineering excellence and innovative spirit. Each design refinement reflects an ongoing commitment to perfecting our product and to increasing the pure joy of driving. With each technical breakthrough, BMW strives to establish new standards – meaningful technology that enhances performance and the value and pleasure of ownership.

A tradition of consummate quality and care – important components of the BMW ownership experience. Our goal is to travel a long road into the future with you – which is why our customer care programs are full of thoughtful services, as well.



BMW's commitment to your driving pleasure and peace of mind begins with our engineers' obsession to create The Ultimate Driving Machine.[®]

Durability and dependability are just as important as luxury and performance. Quality is inherent in every aspect of a BMW – in the manufacture of each component that goes into our vehicles; and in customer care that starts in the showroom and continues in programs that help you protect and maintain your automobile.

Quality service is also a prime concern of BMW, which is why technicians are

thoroughly trained and frequently updated on new diagnostic systems and techniques.

This commitment to quality and customer satisfaction is clearly demonstrated by BMW's 4-year/50,000-mile bumper-to-bumper limited warranty. The 8-Series also has a 6-year/unlimited mileage warranty against rust and corrosion perforation.*

As a result of BMW's impressive safety, security and construction, a revolutionary new insurance program is being offered to qualified new BMW owners** through TIG Insurance Co., a personal-lines insurer – providing access to an improved rate structure. When buying or leasing a new BMW, an insurance quote can be obtained

from TIG within minutes. One toll-free call can bind TIG's economical coverage*** – it's one more way that BMW adds value to ownership.

Enhancing the rewards of ownership, BMW adds another remarkable benefit to 850Ci owners: the BMW Full Maintenance Program, which provides no-charge maintenance for the duration of the new-car warranty and covers prac-

And owners are only a toll-free call away from friendly BMW service. BMW's Roadside Assistance Program†† provides emergency assistance anywhere in the country. The program provides towing, lock-out service, on-site assistance, and even trip-interruption benefits. And for a nominal fee, the BMW Service Card extends this service after the limited warranty for as long as you wish.

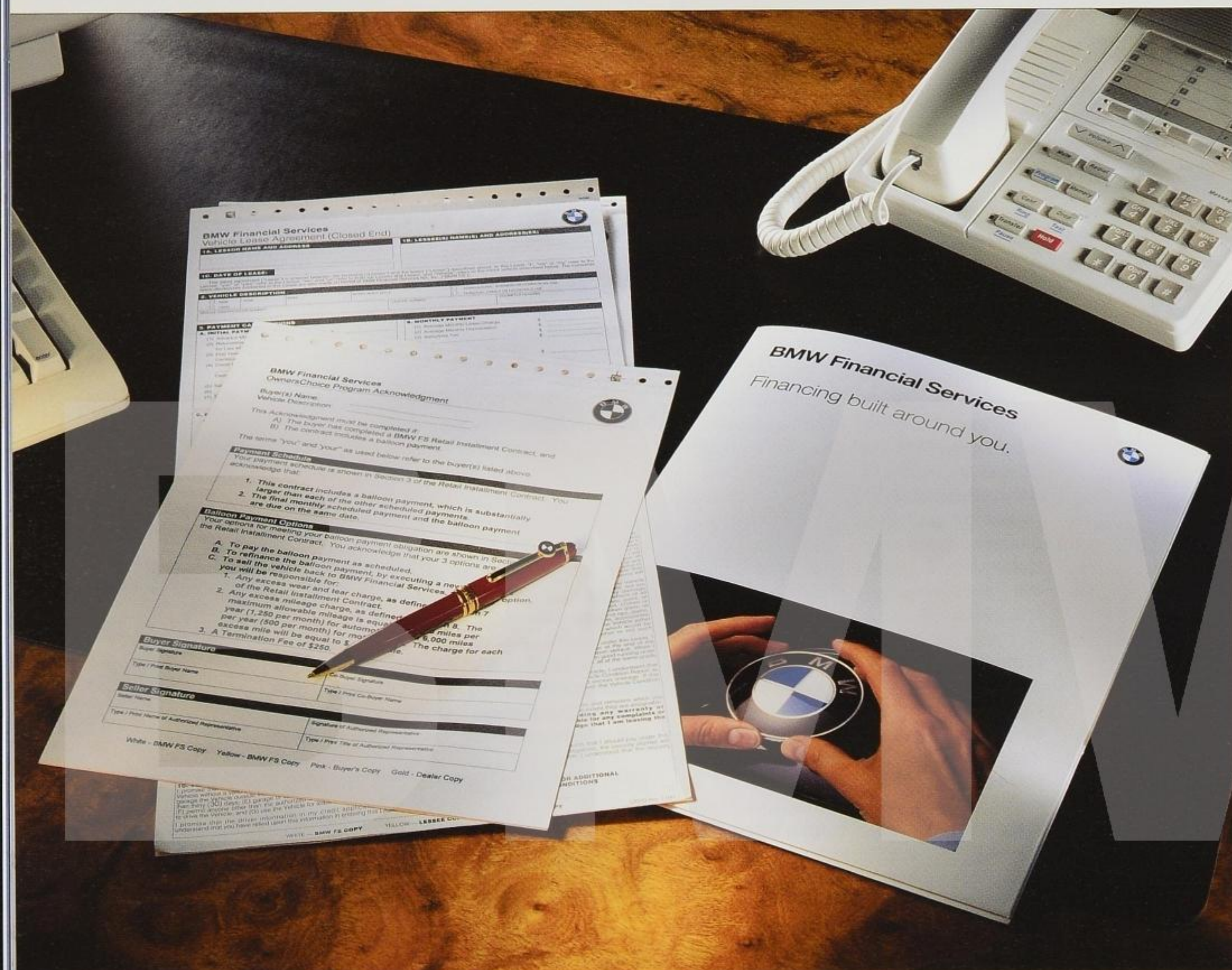


tically everything from oil services to major inspections. (BMW Scheduled and Full Maintenance Programs† are available as an option on the 840Ci.)

At BMW, Customer Care is more than just a buzzword. It's real.

* See your dealer for details on these limited warranties.
 ** Not available in some states. Contact TIG at 1-800-230-1400 for further information.
 *** Subject to TIG's underwriting approval.
 † See your dealer for details on these programs. Some exclusions and mileage limitations apply. Programs available with three different time/mileage options.
 †† Services provided by Cross Country Motor Club, Inc., Boston, MA 02155 except in Alaska, California, Hawaii, Oregon, Wisconsin and Wyoming, where services are provided by Cross Country Motor Club of California, Inc., Boston, MA 02155. Benefits may vary to conform with the laws of your state.

BMW makes owning or leasing a new 8-Series easy. BMW Financial Services NA, Inc. offers financing that can be tailored to your personal needs. And your local authorized BMW dealer can offer attractive opportunities to make the car of your dreams a reality.



BMW Financial Services NA, Inc. offers personalized options for financing that are designed to make

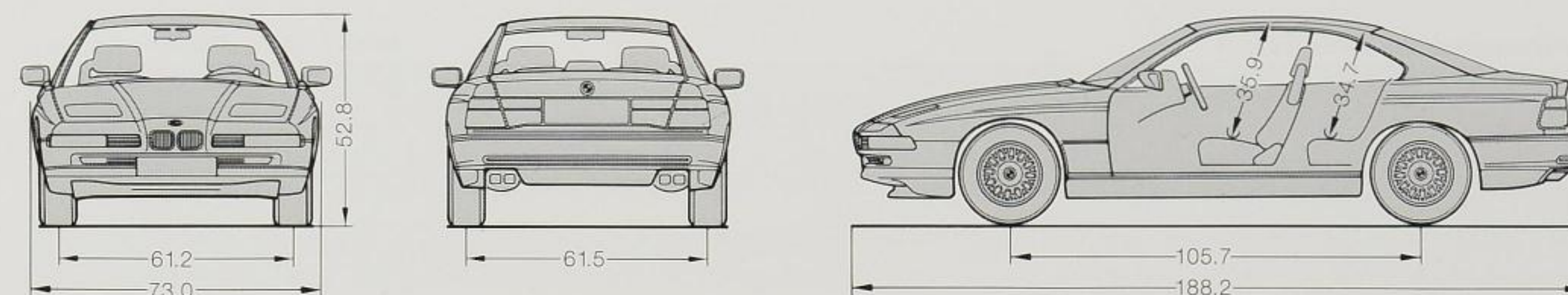
your purchase or lease of a new 8-Series Sports Coupe as smooth and easy as the BMW driving experience.* Payment schedules, insurance information,

registration, maintenance and leasing options are handled efficiently through your local authorized BMW dealership.

We invite you to come in and test drive the new BMW 8-Series Sports Coupes – and discover for yourself what luxury performance driving is all about.

* Subject to credit approval.

Technical Data



All dimensions in inches.

		840Ci	850Ci
Weight			
Unladen	lbs	4167	4288
Max. permissible	lbs	4949	5071
Permitted load	lbs	783	783
Permitted axle load front/rear	lbs	2425/2635	2557/2635
Permitted roof load	lbs	165	165

		840Ci	850Ci
Engine			
Liter/type		4.4/V8	5.4/V12
Bore/stroke	inch	3.62/3.26	3.35/3.11
Nominal output/rpm	hp	282/5700	322/5000
Max. torque/rpm	lb-ft/min	310/3900	361/3900
Compression ratio/fuel grade	:1	10.0/unleaded premium	10.0/unleaded premium

		840Ci	850Ci
Transmission			
Transmission ratios I/II/III	:1	3.55/2.24/1.54	3.55/2.24/1.54
	IV/V/R	1.00/0.79/3.68	1.00/0.79/3.68
Final drive ratio	:1	2.81	2.81

		840Ci	850Ci
Performance			
Drag coefficient	C _d	0.29	0.29
Top speed*	mph	155	155
Acceleration 0 – 60 mph**	sec	7.0	6.4

		840Ci	850Ci
Fuel Consumption*			
City	mpg	15	14
Highway	mpg	20	20

		840Ci	850Ci
Wheels			
Tire dimensions		235/50 R – 16 95 W	235/50 R – 16 95 W
Wheel dimensions		7.5J x 16	7.5J x 16
Material		light alloy	light alloy

		840Ci	850Ci
Electrical System			
Battery capacity	Amp-hours	65 x 2	65 x 2
Alternator output	Amps/Watts	140/1960	140/1960

* Top speed limited electronically.

** Actual acceleration results may vary, depending on specification of vehicle; road and environmental conditions; testing procedures and driving style. These results should be used for comparison only and verification should not be attempted on public roads. BMW urges you to obey all posted speed laws, and to please wear your safety belt at all times.

* EPA-estimated figures are for comparison purposes only. Your actual mileage may vary, depending on speed and trip length; actual highway mileage will most likely be lower.

Standard and Optional Equipment

Performance and efficiency	840Ci	850Ci
Light alloy 4.4-liter 32-valve V8 engine, four overhead camshafts	●	
Light alloy 5.4-liter V12 engine, two overhead camshafts running in seven bearings each		●
Direct ignition system	●	
Digital Motor Electronics (DME)	●	
Dual Digital Motor Electronics (DME)		●
Five-speed STEPTRONIC dual-mode transmission with Adaptive Transmission Control (ATC)	●	●
Adaptive knock control	●	●

Handling, ride and braking	840Ci	850Ci
Servotronic power steering	●	●
Double-pivot, strut-type front suspension	●	●
Five-link integral rear suspension	●	●
Front and rear anti-roll (stabilizer) bars	●	●
Twin-tube gas-pressure shock absorbers	●	●
Electronic Damping Control (EDC)		●
All Season Traction	●	●
Dynamic Stability Control (DSC)		●
Four-wheel disc brakes, vacuum-assisted, ventilated front	●	●
Anti-lock braking system (ABS)	●	●
Full-use spare alloy wheel and tire	●	●
Dual-spoke light alloy wheels, 7.5J x 16	●	●
Forged alloy wheels	○	○

Exterior and aerodynamics	840Ci	850Ci
Body-colored front and rear bumpers and outside mirrors	●	●
Power-adjustable side-view mirrors	●	●
Heated windshield-washer nozzles, driver's door lock and outside rear-view mirrors	●	●
Retractable headlights	●	●
Ellipsoid low-beam headlights; halogen foglights and high-beam headlights	●	●
Metallic and non-metallic paint colors	●	●

Audio system	840Ci	850Ci
Anti-theft AM/FM stereo/weather band/cassette audio system with 10-channel, 200-watt power output (at 10% total harmonic distortion) and 12 speakers	●	●
Rear-window-mounted diversity antenna system	●	●
Pre-wiring for dealer installation of BMW cellular telephone and CD player	●	
Voice-activated in-car/portable BMW cellular telephone with automatic audio mute	○	●
BMW CD player	○	●

Instrumentation and controls	840Ci	850Ci
Electronic analog speedometer and tachometer; analog fuel-economy indicator	●	●
Digital main and trip odometers	●	●
Integrated on-board computer	●	●
Multi Information Display (MID) with Check/Control vehicle monitor system	●	●
External temperature display	●	●
Integrated cruise control	●	●
Rear-window defroster	●	●
Two-speed wipers with driver-adjustable and car-speed-variable interval setting	●	●
Power windows with key-off operation, "one-touch" up and down operation	●	●
Service Interval Indicator	●	●

● = Standard
○ = Optional
† Part of Dynamic Stability Control.

Interior seating and trim	840Ci	850Ci
Gathered Nappa leather seating and door trim	●	●
Leather-wrapped steering wheel and shift knob	●	●
Split fold-down rear seats	●	●
Power front seats (10-way driver, 8-way passenger) with tilt-adjustable headrests and lumbar support	●	●
Heated front seats	●	●
Power tilt and telescopic steering wheel with automatic tilt-up for entry and exit	●	●
3-setting memory system for driver's seat, steering-wheel position and side-view mirrors	●	●
High-gloss bird's-eye maple wood trim	●	●
Rechargeable flashlight in glovebox	●	●
Ski bag between rear seats	●	●
Velour carpeting	●	●

Comfort and convenience	840Ci	850Ci
Automatic climate control with separate left/right settings, and automatic recirculation	●	●
Ozone-friendly (CFC-free) air-conditioning refrigerant	●	●
Micro-filter ventilation system	●	●
Automatic ventilation system (can be programmed to ventilate car when parked)	●	●
Power two-way sunroof with key-off and "one-touch" operation	●	●
Interior courtesy lights with automatic dimming function	●	●
Dual front illuminated visor mirrors and map lights	●	●
Automatic-dimming inside rear-view mirror	●	●
Velour-lined, fully finished trunk with drop-down tool kit	●	●
Coin box in driver's door	●	●

Safety and security	840Ci	850Ci
Driver's- and passenger's-side airbag supplementary restraint system (SRS) with system to prevent unnecessary passenger's-side airbag deployment	●	●
Remote keyless entry/alarm system	●	●
Central locking system with double-lock anti-theft feature; valet parking security locking feature for trunk and glove compartment	●	●
Coded Driveaway Protection (prevents engine start when special key with constantly changing electronic code is not used)	●	●
Anti-lock braking system (ABS) and All Season Traction	●	●
Crash sensor that automatically turns on hazard lights, interior lights and unlocks doors	●	●
BMW Scheduled Maintenance Program	○	
BMW Full Maintenance Program	○	●

● = Standard
○ = Optional

Color and Upholstery

Standard Colors



300 Alpine White



314 Bright Red



668 Jet Black

Metallic Colors



309 Arctic Silver



252 Calypso Red



317 Orient Blue



324 Oxford Green



303 Cosmos Black

Leather Upholstery



M5PH Light Parchment



M5SH Light Silvergray



M5PE Parchment



M5SL Silvergray



M5SW Black

The darker shades show the color of the dashboard.

Note: Paint availability varies throughout model year. We suggest you visit your local BMW dealer and inspect the actual colors.

Recommended Exterior and Interior Color Combinations

Model	Interior Fittings	Code No.	Standard Colors			Metallic Colors					
			300 Alpine White	314 Bright Red	668 Jet Black	309 Arctic Silver	252 Calypso Red	317 Orient Blue	324 Oxford Green	303 Cosmos Black	
840Ci 850Ci	Leather	Light Parchment	M5PH	●	●	●		●	●	●	
		Light Silvergray	M5SH	●		●		●	●	●	●
		Parchment	M5PE	●	●	●		●		●	
		Silvergray	M5SL	●		●	●	●	●	●	●
		Black	M5SW		●	●					●

Interior upholstery colors are not available in all exterior finishes. See your local BMW dealer for accurate details. This brochure shows the current recommended combinations of colors and materials. Specifications listed are subject to change without notice.

U.S. Importer: BMW of North America, Inc. Woodcliff Lake, N.J. 07675. All illustrations and specifications contained in this brochure are based on the latest product information available at the time of printing. BMW reserves the right to make changes at any time, without notice, in colors, materials, equipment, specifications and models. BMW will, subject to legal requirements, determine the Model Year designation of its vehicles. The Model Year designation on any particular model may be longer or shorter than 12 months. Some vehicles pictured may contain non-U.S. equipment. Some models may be shown with optional equipment. Further information can be obtained from your BMW dealer. The BMW name and logo are registered trademarks. © 1996 BMW AG, Munich/Germany. Not to be reproduced wholly or in part without written permission of BMW AG, Munich.

BMW Celebrates World Class Performance



Official International Automobile Sponsor
Official Motorcycle Sponsor
Official Mountain Bike Sponsor

BMW – the ultimate driving machine.®